



SEABIKE®

LEARN TO SWIM IN A NEW WAY



1.



Unscrew the gearbox screw.

2.



Align the white markers on the parts. Connect gearbox and telescopic frame

3.



Insert and tighten the gearbox screw.

4.



Unscrew the telescopic frame screw.

5.



Adjust the height of the Seabike.



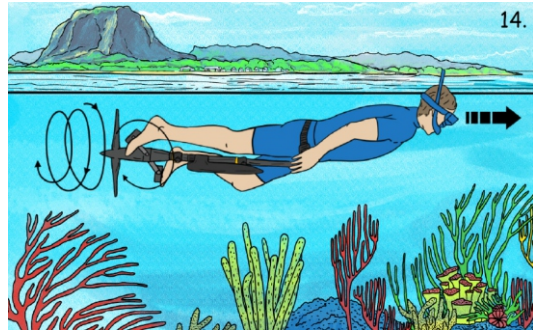
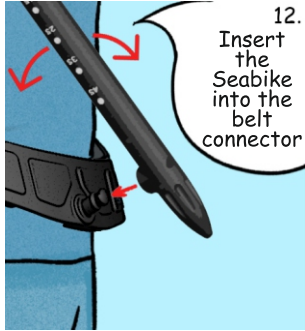
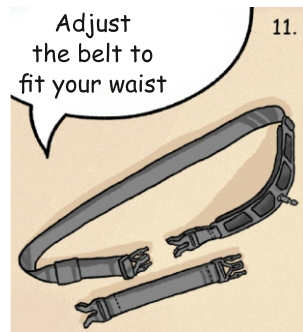
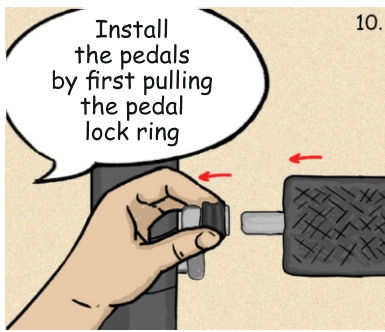
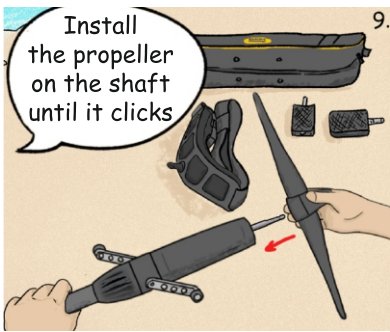
Adjust the height approximately to chest height

7.



Find the smallest marker size, insert and tighten the screw.

8.



AFTER USE

